

Thank you for purchasing this Cobra jet kit. This kit has been developed for a motorcycle which is set to the parameters listed at the right in the "Stage" description. If your motorcycle does not meet any of these parameters please check with Cobra before installation. For technical assistance contact Dynojet (800)-992-4993



Cobra Engineering
23801 E. La Palma Ave.
Yorba Linda, CA. 92887
TEL: 714-692-8180
FAX: 714-692-5016

92-2271

U.S Models Only

1999-2003 Yamaha Road Star 1600

Stage 1

For mildly tuned machines using the stock airbox, with stock filter and Cobra Boulevard exhaust system

Website Address
<http://www.cobrausa.com>

The manufacturer and seller make no warranties express or implied which extend beyond the description of the goods contained herein. Any description of this product is for the purpose of identifying it and shall not be deemed to create an express warranty.



This graph shows a typical gain with a Cobra jet kit.

WARNING

**NO SMOKING!
NO OPEN FLAME!
WHILE INSTALLING
YOUR DYNOJET KIT**

Parts List		
1	Main Jet	DJ155
1	Main Jet	DJ160
1	Main Jet	DJ165
1	Main Jet	DJ170
1	Fuel Needles	DNO977
1	E-Clips	DE0001
1	Adjusting Washers	DW0001
1	Plug	DJP001
1	Needle Spring	DSP77
1	Plug Drill	DD #5/32
1	Screw	DS0001

*For racing use only. Not for sale in the State of California.

STAGE ONE INSTRUCTIONS

1. Remove the vacuum slide from the carb. Remove stock needle and spacers, noting order of assembly (Fig.A).
2. Install the Cobra needle on groove #3 from the top. Use all stock spacers (Fig. A). The small Cobra washer is for half step increments and does not have to be installed at this time. **NOTE:** The DSP77 spring does not have to be used, it is supplied in case the stock spring is misplaced. After installing the slide in the carb be sure to check slide movement manually.
3. Remove the stock main jet and replace with the Cobra main jet provided. Use the DJ160 main jet when running the Drag pipes **WITH** baffles or when running the Classic exhaust. Use the DJ165 main jet when running Drag pipes **WITHOUT** baffles, or slip-on mufflers. Be sure that the jet you are changing is the main jet.
4. Locate the fuel mixture plug (Fig. B). If you see a screw head at Fig.B then proceed to the adjusting procedure. With the 5/32 drill bit provided carefully drill through the plug. **NOTE:** The mixture screw is directly underneath this plug, be ready to pull back on the drill the instant you break through. Use screw provided to secure and remove this plug. Carefully turn the mixture screw clockwise until lightly seated, then back out 3 turns.
5. Locate the canister shown in Fig.C. Remove the 3 bolts that are shown in Fig.C in-order to move the canister aside. Remove the hose located on the back side in the center of the canister, move the canister out of the way enough to insert the plug DJP001 in the hose shown in Fig.D. Reinstall the canister.

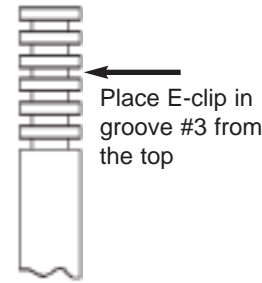


Fig. C

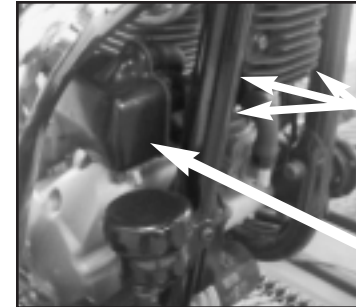
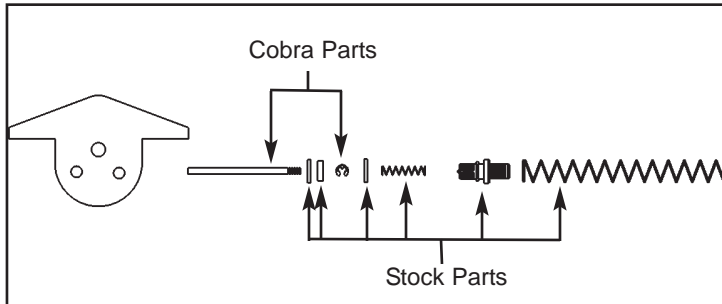


Fig. D



Fig. A



MIXTURE SCREW

Fig. B

