

Items Supplied >

1 – FRONT HEADPIPE W/ HEATSHIELD
1 – REAR HEADPIPE W/ HEATSHIELD
1 – MUFFLER ASSEMBLY
1 – EXHAUST MOUNT BRACKET
2 – CLAMPS, 27-59MSC (MUFFLER CLAMP)
4 – CLAMPS, HS-24
2 – CLAMPS, HS-28
2 – BOLT, HEX M8 X 25mm
2 – BOLT, HEX FLANGE 5/16-18 x 5/8" w/ LOCTITE
2 – SCREW, BUTTONHEAD ¼-20 x 3/8"
2 – BILLET MUFFLER TIPS

Application(s) >

HONDA SHADOW RS 750 2010-2013

Instruction Manual >

1714/1914

Page 1 of 2

PRIOR TO INSTALLATION, MAKE SURE YOUR STOCK HEADPIPE GASKETS ARE IN GOOD SHAPE. IF YOU HAVE ANY DOUBTS AS TO THEIR CONDITION, REPLACE THEM.

Read all instructions carefully and completely before installing your new exhaust system!

1. Remove the stock exhaust system and muffler mount. Save the (2) M8 nuts that secure the exhaust mount.
2. Loosen and move the right side rider footpeg assembly out of the way to ease installation of the exhaust.
3. Mount the supplied exhaust mount bracket to the motorcycle frame using the (2) supplied M8 bolts and stock M8 nuts but **DO NOT TIGHTEN** at this time. See Figure 1.
4. Install the front and rear headpipes onto the motorcycle using the stock acorn nuts on the headpipe flanges.
5. Slide one supplied 27-59MSC clamp onto each muffler inlet and position as shown in Figure 1.
6. Slide the muffler assembly onto the headpipes by tapping the headpipes with your hand as you push the mufflers forward making sure the mufflers slide as far forward as possible. Secure the muffler assembly to the exhaust mount bracket using the supplied (2) 5/16"-18 bolts but **DO NOT TIGHTEN** at this time. **Note:** Position the bolts in the middle of the slots on the exhaust bracket.
7. Make sure the muffler assembly is parallel to the headpipes then tighten the following in order; exhaust bracket to the frame, headpipe flanges to the motor (slowly tighten opposing acorn nuts) muffler clamps, and muffler assembly to the exhaust bracket. (NOTE: If the muffler clamps are slid past the slots, the clamps will not tighten properly.)
8. Unscrew the hose clamps and feed the tail end of the clamp through the clips on the inside of the heatshields. The screw end of the hose clamp should be accessible for tightening but not visible when the heatshields are mounted to the pipes, as shown in Figure 2. Note: the smaller hose clamps go around the headpipes and the larger ones around the muffler bodies.
9. To install the front heatshield, first slide the rear portion of the heatshield over the muffler, continue to slowly slide it forward pushing the front of the shield gently into place between the frame and motor (Hint: Spread the hose clamps apart slightly to make it easier to slide them over the muffler bodies and headpipes). Snug the heatshield clamps but **do not tighten**.
10. Install the rear heatshield the same way as the front heatshield.

*** Cobra® recommends you always wear a helmet while riding. Please never operate your motorcycle while under the influence of alcohol and/or drugs. Enjoy the new look of your motorcycle and please ride safely.**

11. Install one billet tip on each heatshield making sure the ends of the tips are parallel with each other. Fasten the tips with the supplied 1/4" buttonhead screws making sure they snug up against the heatshield leaving no gap between the tip and heatshield when tightened. **If it is difficult to slide the tips into the heatshields loosen the clamps on the heatshield, failure to do this may cause damage to the chrome tips.**
12. Tighten the clamps on the heatshields.
13. Reinstall the right side footpeg assembly and tighten the bolts to factory specifications.
14. Make sure all the hardware (brackets, exhaust pipes, heatshields, and baffles) have been tightened and cleaned before starting the motorcycle.

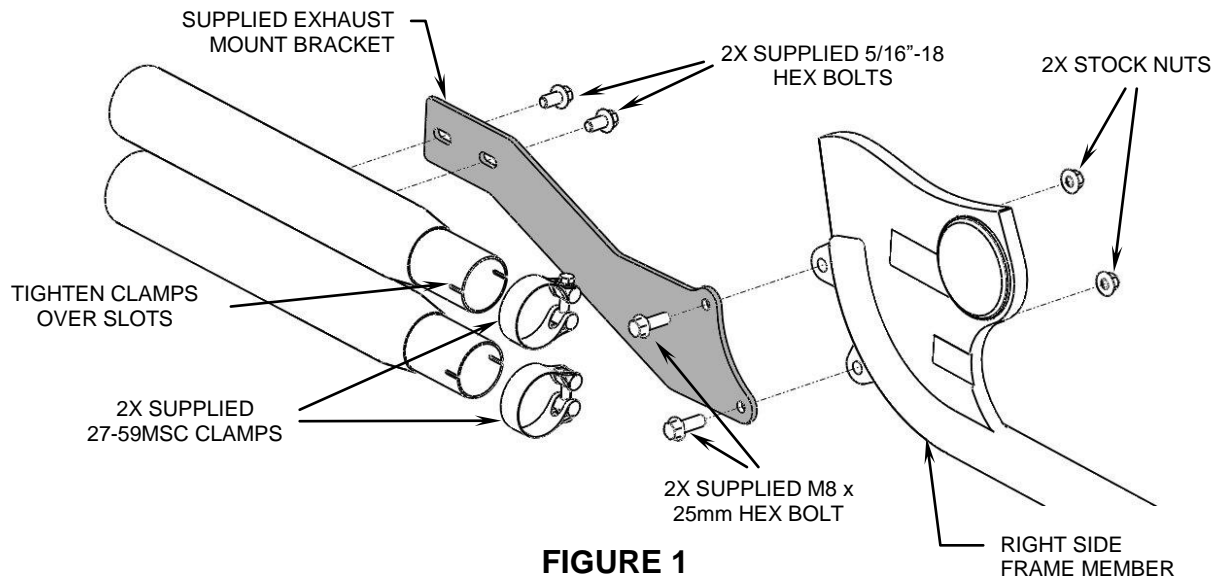


FIGURE 1

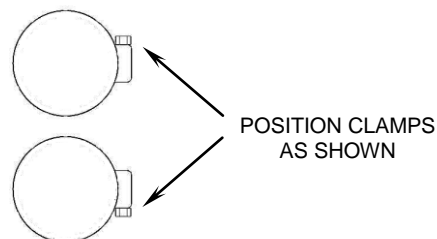


FIGURE 2

(FRONT VIEW)

IMPORTANT: Cobra highly recommends using a Fi2000® Fuel Management System to help eliminate lean conditions and popping sounds. (Cobra Part# 92-1614 for 49 state models and Part# 92-1614-50 for CA models.)

Before starting your engine remove all fingerprints from chrome with a quality wax or chrome polish. Failure to do so can cause discoloration.

California does not allow the use of aftermarket exhaust systems that remove original equipment catalyists, (except for racing use only) unless the Air Resources Board has issued an Executive Order for that system.