

Thank you for purchasing this Cobra Dynojet kit. This kit has been developed for a motorcycle which is set to the parameters listed at the right in the "Stage" description. If your motorcycle does not meet any of these parameters please check with Dynojet before installation. For technical assistance contact your Dynojet distributor or call Dynojet U.S.A. (800)-992-4993

Cobra Engineering
23801 E. La Palma Ave.
Yorba Linda, CA. 92887
TEL: 714-692-8180
FAX: 714-692-5016

Website Address
<http://www.cobrausa.com>

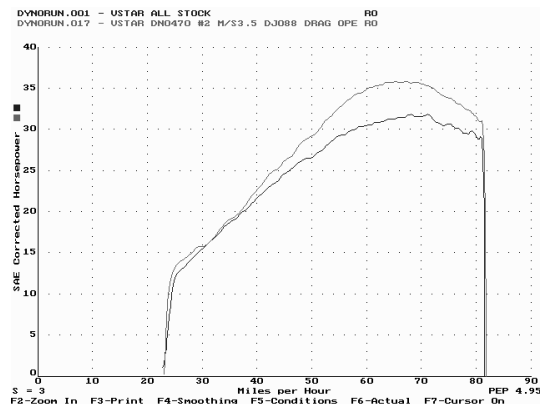
The manufacturer and seller make no warranties express or implied which extend beyond the description of the goods contained herein. Any description of this product is for the purpose of identifying it and shall not be deemed to create an express warranty.

COBRA[®]
Anything's Possible

92-2164
U.S Models Only

1998-2008 Yamaha XVS650 V-Star
Stage 1

For mildly tuned machines using the stock airbox, with stock filter and Cobra exhaust system



This graph shows a typical gain with a Cobra jet kit.

WARNING

**NO SMOKING!
NO OPEN FLAME!
WHILE INSTALLING
YOUR JET KIT**

Parts List

2	Main Jets	CJ086
2	Main Jets	CJ090
2	Fuel Needles	DNO470
2	E-clips	DE0001
2	Adjusting Washers	DW0001
1	Plug Drill	DD 5/32
1	Screw	DS0001

STAGE ONE INSTRUCTIONS

COBRA

92-2164

1. Remove the vacuum slides from the carbs. Remove stock needles and spacers noting order of assembly (Fig.A).
2. Install the Cobra needles on groove #2 when running Drag pipes or classic style exhaust **WITH** baffles installed. Install the Cobra needles on groove #3 when running Drag pipes **WITHOUT** baffles installed. Use all stock spacers (Fig. A). Install the Cobra washers above the e-clip.
3. Remove the stock main jets and replace with the Cobra main jets provided. If you are running the Drag pipes or classic style exhaust **WITH** baffles install the CJ086 main jets or the CJ090 main jets **WITHOUT** baffles. Be sure that the jet you are changing is the main jet.
4. Locate the fuel mixture plug (Fig. B), if you see a screw head at Fig. B proceed to the adjusting procedure. With the 5/32 drill provided, carefully drill through the plug. **NOTE:** The mixture screw is directly underneath this plug, be ready to pull back on the drill the instant you break through. Use screw provided to secure and remove this plug. Carefully turn mixture screw in until lightly seated, then back out 3 turns.

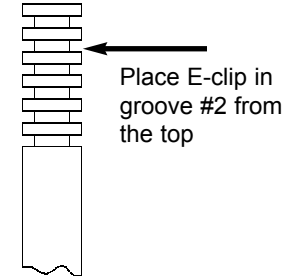


Fig. A

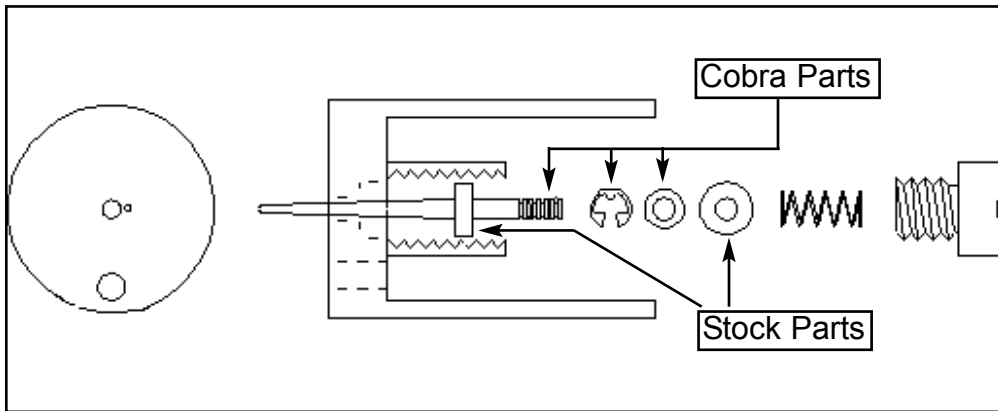


Fig. B

